

MIBGuide/Lite

MIBGuide™ (Management Information Base Graphical User Integrated Development Environment) is an application suite designed to ease the burden of creating and implementing MIB documents in network and application management applications.

MIBGuide™/Lite is the first member of the MIBGuide family and provides an easy-to-use interface for users to compose, edit, and save SMIV2 compliant MIB documents. MIBGuide/Lite shields the user from the complexities of maintaining syntactically correct ASN.1 notation and from understanding the SMIV2 rules. This allows the developer to focus on the data to be managed, which will dramatically speed up the MIB development process.

MIBGuide/Lite combines Java and XML technology with SNMP Research's many years of network management expertise to provide a truly integral tool for MIB development. Since 1988, SNMP Research has both developed MIBs and assisted customers with their own proprietary MIB document development.

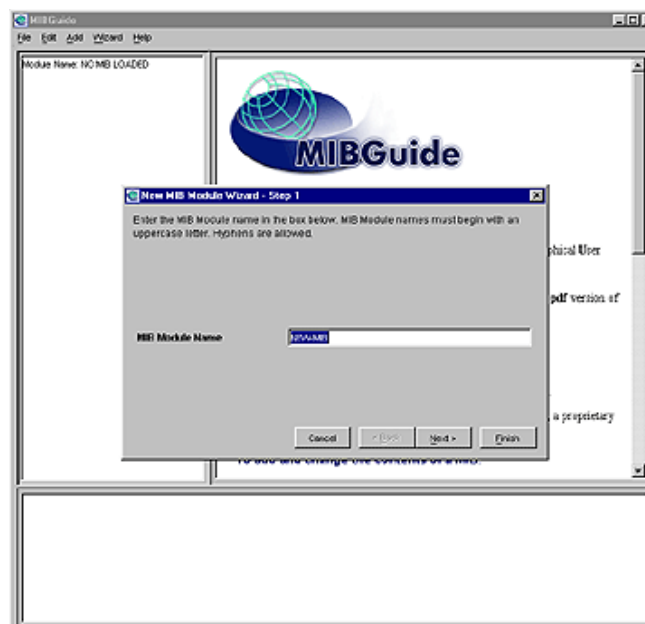
With MIBGuide/Lite, you may never again have to edit a MIB document by hand!

MIBGuide/Lite is the perfect aid for both the novice and advanced MIB developer. MIBGuide/Lite includes wizards which provide a step-by-step approach to creating basic MIB components that can help ease the learning curve associated with MIB composition. Even advanced MIB developers will enjoy MIBGuide/Lite's built-in flexibility to write, edit, and save even the most advanced MIB documents. For example, the MODULE-COMPLIANCE document and multi-dimensional tables are some of the more time-consuming MIB elements to be created, and MIBGuide/Lite's visual and intuitive approach makes them a breeze.

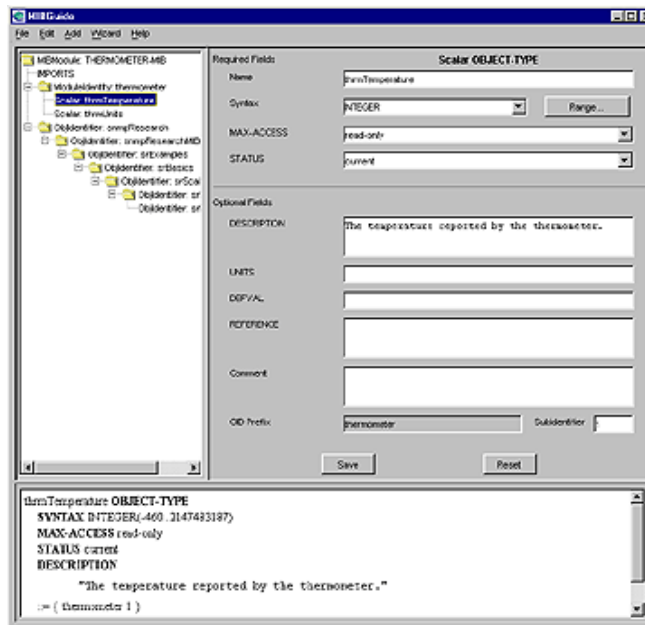
MIBGuide/Lite applies a unique approach to MIB document creation:

- Provides a point-and-click interface for manipulating the elements of MIB documents.
- Provides easy-to-use wizards for novice MIB developers.
- Automatically selects the default (and most commonly used) options available.
- Automatically generates syntactically correct MIB documents.
- Handles even the most advanced MIB documents.
- Provides a well-developed learning and productivity tool.
- Uses Java®-application and XML technology.

Product Preview



MIBGuide/Lite collects information for new MIB documents using a wizard.



MIBGuide/Lite imports existing MIB documents, such as the thermometerMIB.

Packaging

MIBGuide/Lite can be packaged with any of the SNMP Research agent development products.

Supported Platforms

MIBGuide/Lite is currently supported on the following platforms:

- Solaris® 8 and 9
- Red Hat® Linux® 9 and Red Hat® ES/AS/WS 3
- Microsoft® Windows® NT, 2000, XP, and Windows® Server® 2003

However, support for other platforms may be available upon request.

System Requirements

MIBGuide/Lite requires the use of the Java® Runtime Environment (JRE) version 1.4.1.

¹As of this writing, MIBGuide/Lite is the only product available from the MIBGuide family. Other MIBGuide product offerings may become available in the future.

* Java and Solaris are registered trademarks of Sun Microsystems, Inc. Microsoft, Windows, and Windows NT, Windows Server are trademarks or registered trademarks of the Microsoft Corporation. Red Hat and Red Hat Linux are a registered trademarks of Red Hat, Incorporated.

